



Defence
Infrastructure
Organisation

**CATTERICK
TRAINING AREA
NORTH YORKSHIRE
WOODHOUSE FARMHOUSE
DISPOSAL PLAN**

Scale 1:2,000

IMPORTANT NOTE ABOUT SCALE
The scale ratio stated is accurate when reproduced at A4 size by Geospatial Services. Any other reproduction by conventional or electronic means, e.g. printing from a PDF, may alter the scale of the map. Please check the dimensions of the grid to confirm any change in scale before taking measurements.

PRODUCTION REFERENCE

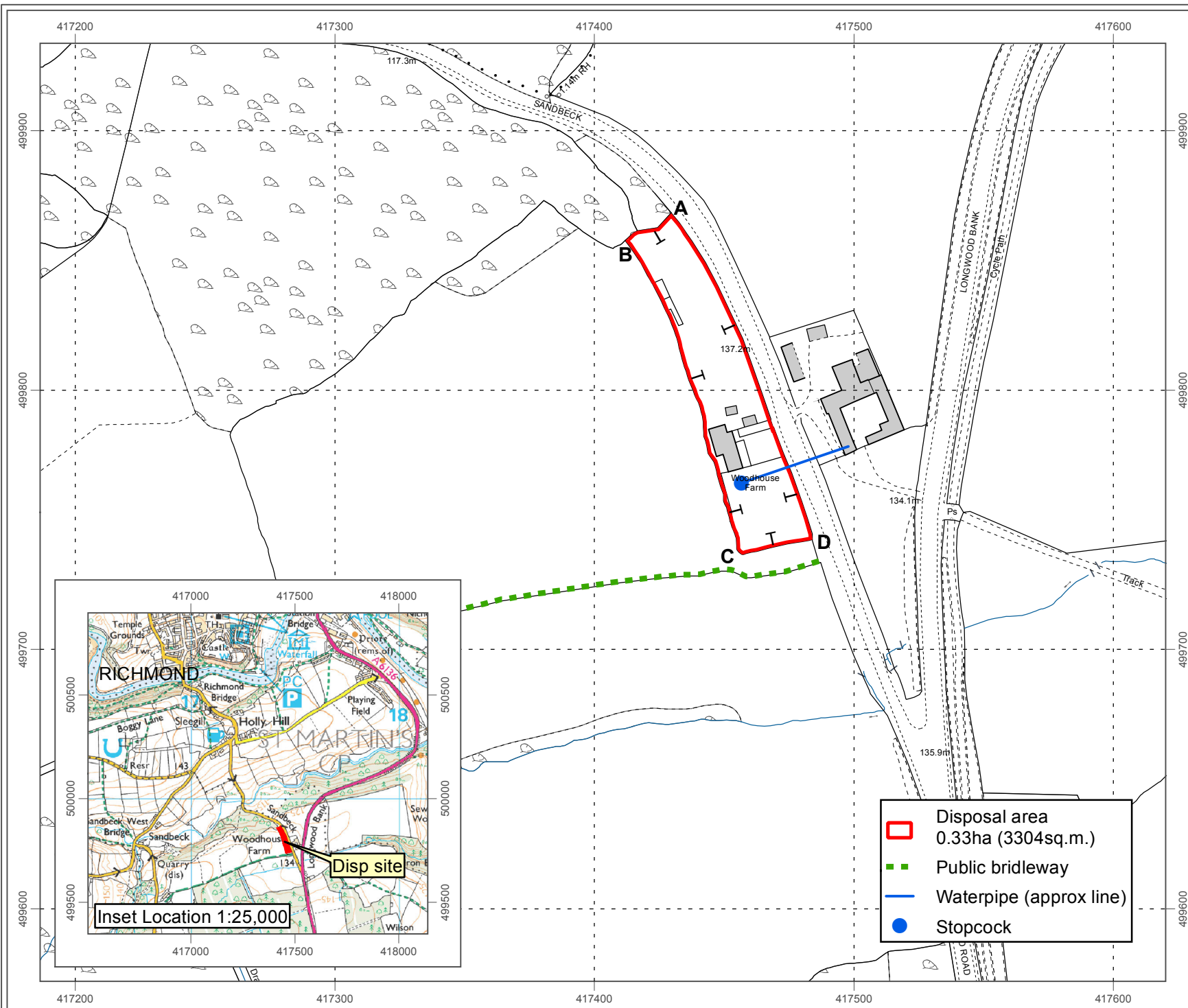
PLEASE ENSURE THAT THE MAP REFERENCE AND VERSION NUMBER ARE QUOTED IN **ALL WRITTEN & VERBAL CORRESPONDENCE**

Map reference:
Transactional\2018\20180712-7450
Catterick, Woodhouse Farmhouse disposal plan
Version Number:
1

Production Date:
17.07.2018
Drawn By:
J.L. (DIO Data-1a1h Geo Ops Analyst)
Checked By:

**GEOSPATIAL SERVICES
DATA ANALYTICS & INSIGHT**

Defence Infrastructure Organisation
St George's House
Kingston Road
SUTTON COLDFIELD B75 7RL
E-MAIL: DIO Data-Geo Svcs@mod.uk



	Disposal area 0.33ha (3304sq.m.)
	Public bridleway
	Waterpipe (approx line)
	Stopcock